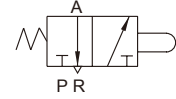
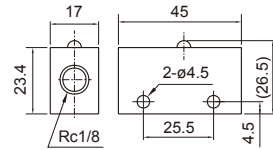


EPA 系列

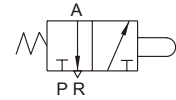
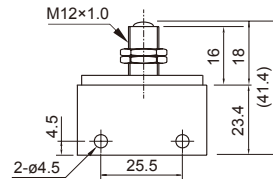
機械閥



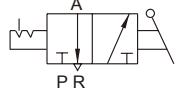
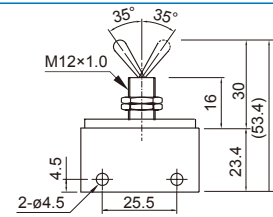
稍柱型
EPA-100



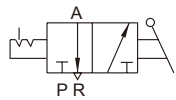
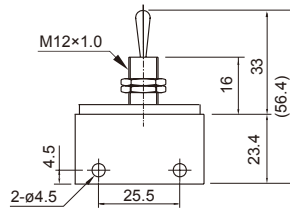
鋼珠型
EPA-100A



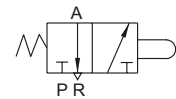
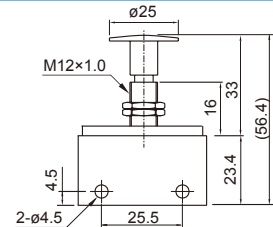
搖桿型
EPA-101



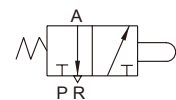
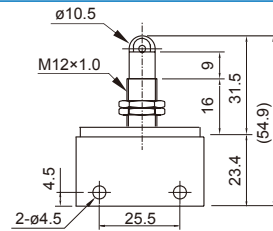
萬向型
EPA-101A



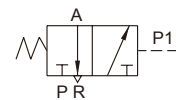
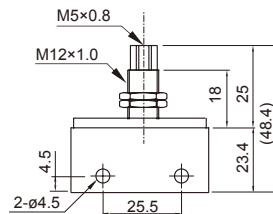
壓扣型
EPA-102



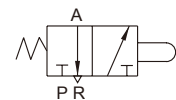
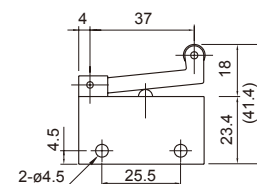
輪柱型
EPA-103



氣動型
EPA-104



輾輪型
EPA-105

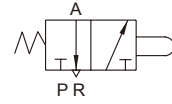
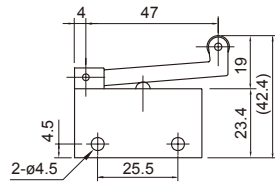


EPA 系列

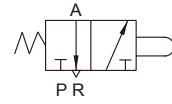
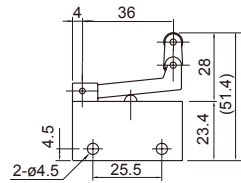
機械閥



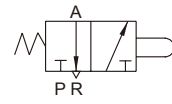
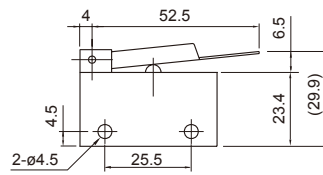
輓輪型
EPA-105L



單向滾輪型
EPA-106

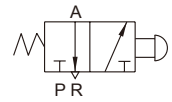
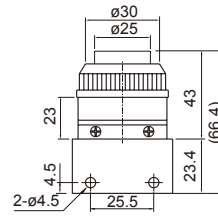


指壓型
EPA-107



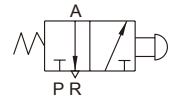
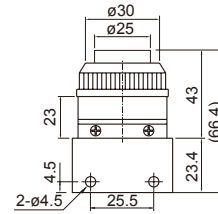
平頭按鈕型
EPA-108B*

*B= 黑色

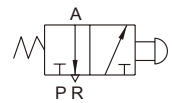
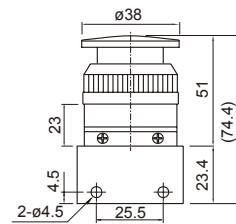


平頭按鈕型
EPA-108G*

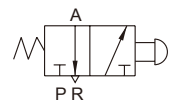
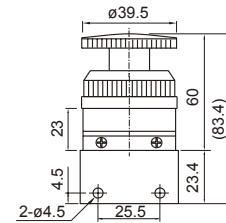
*G= 綠色



大頭按鈕型
EPA-108RA



連鎖按鈕型
EPA-108RA RESET



選擇型
EPA-109

