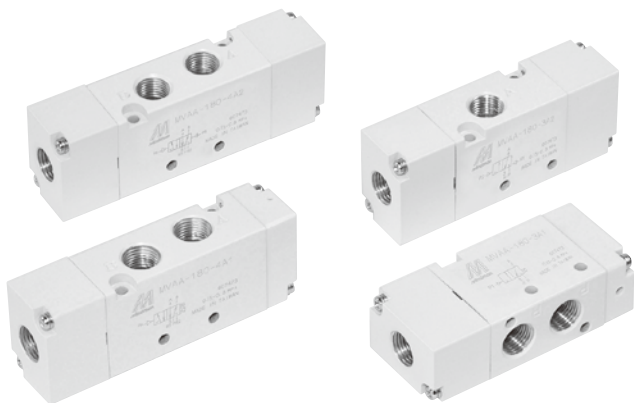


# MVAA-180 系列

氣動閥



## 規格

型號	3A1	3A2	4A1	4A2
配管口徑代號	6A			
配管口徑尺寸	Rc1/8			
方口數	3 口		5 口	
使用流體	空氣			
使用壓力範圍	0~0.8	0.15~0.8	0~0.8	
耐壓力	1 MPa			
有效斷面積	12 mm <sup>2</sup>			
導引壓力範圍	(0.45×P*+0.1)~0.8 MPa			
周圍溫度	-5~+60°C (不凍結)			
重量	61 g	74 g	71 g	84 g

\* P: 使用壓力

## 訂購代號

MVAA - 180 - 4A2 - NC - G

型號

本體寬度

A1: 單動氣壓導引

A2: 複動氣壓導引

NC: 常閉型

NO: 常開型

(僅適用 3A1)

配管口螺牙

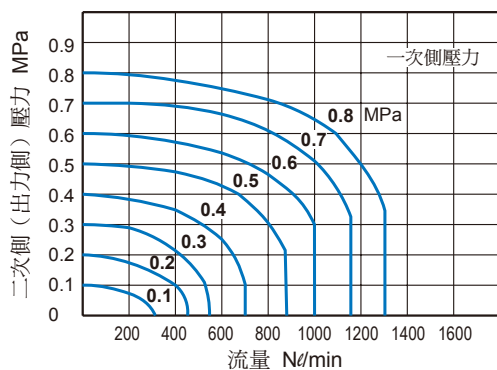
無: Rc 牙

G: G 牙

NPT: NPT 牙

3: 3 方向 (3 方口)  
4: 4 方向 (5 方口)

## 流量特性圖

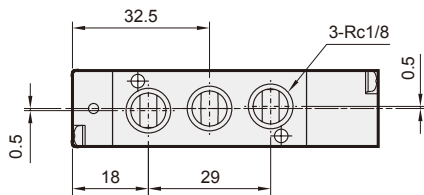
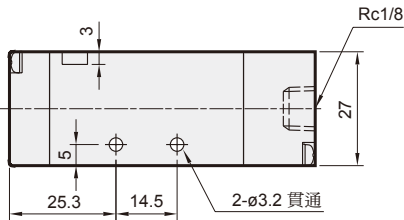
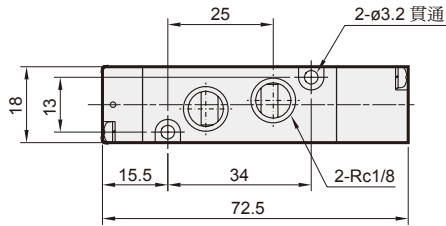
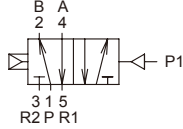


# MVAA-180 外觀尺寸

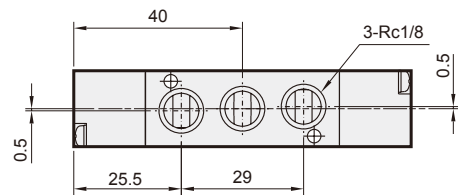
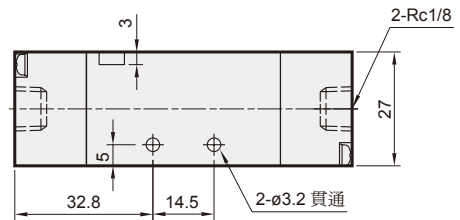
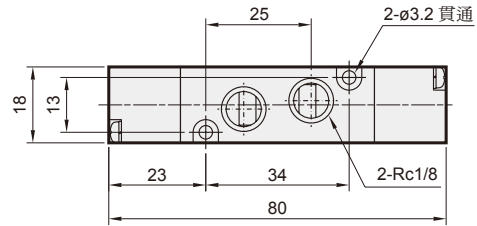
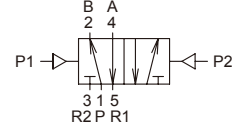
氣動閥



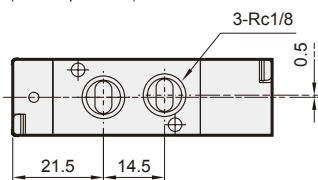
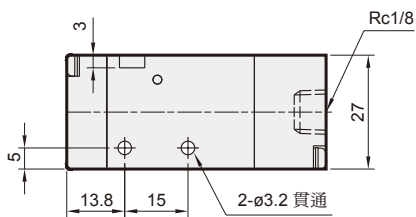
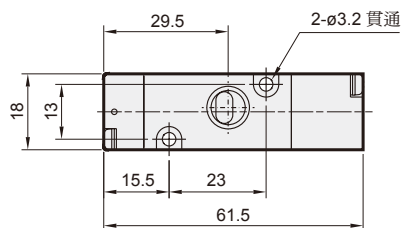
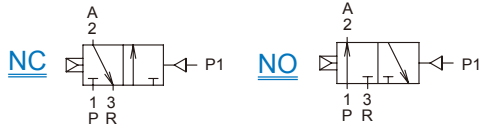
## MVAA-180-4A1



## MVAA-180-4A2



## MVAA-180-3A1-NC/NO



## MVAA-180-3A2

